

Simultaneous Closure of Midline Diastema Using a Direct Resin Buildup Technique



Marcos Vargas, DDS*

- Composite resin materials for this technique must have handling characteristics that allow placement in the restorative site without slumping.
- Two increments of nanocomposite resin (ie, Filtek Supreme Plus, 3M ESPE) were placed simultaneously and contoured to optimal proportion on the mesial aspect of the centrals.
- A matrix was placed between the central incisors; composite was layered against the matrix lingually and pulled through toward the facial to ensure proper contour.
- Finishing and polishing were performed to render final anatomy and luster using a #12 blade, SofLex disks (3M ESPE), and polishing cups and strips.



Two increments of Filtek Supreme Plus (3M ESPE) are applied to the diastema



An interproximal carving (IPC) instrument is used to adapt the resin to proper contour



Marcos Vargas, DDS



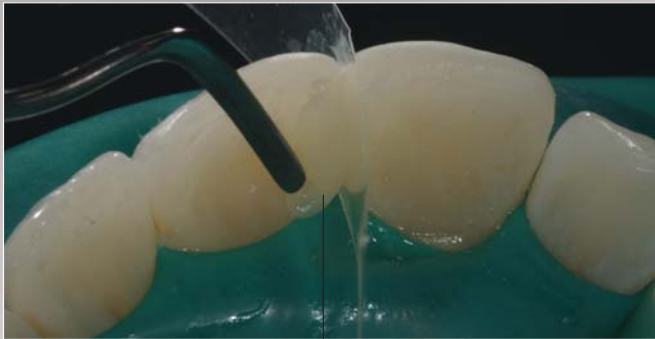
The cervical embrasures are formed using the IPC instrument



A finishing disk (SofLex, 3M ESPE) is used to perform facial contouring



Surface characteristics are rendered with a diamond bur without water irrigation



Resin increment is placed lingually against the matrix, which is pulled through the interproximal to the facial surface



Light curing of the direct resin buildup



Eptax strips (GC America) are used to finish the interproximal region



Associate Professor, University of Iowa, School of Dentistry, Iowa City, Iowa.

University of Iowa, 5229 Dental Science Building,
Iowa City, IA 52242
Tel: 319-335-7208
Email: margos-vargas@uiowa.edu