

DENTAL ED
2023

NORTH AMERICA

WWW.DENTALEDGLOBAL.COM



◀ TABLE OF CONTENTS ▶

1

FADI YASMIN

Facially driven immediate implant rehabilitation -analog and digital workflows

2

PAUL ABBOTT

There are cracks ... and there are cracks – but what is a crack and what do I do about a crack?

3

JIM MCKEE

A New Perspective On Occlusion

4

BOB MARGEAS

Matching a Single Central With a Direct Composite Veneer

5

ALEX MOULE

Dental or Mental; An Endodontist Looks at Orofacial Pain

6

PASCAL MAGNE

The Oral Blueprint; an easthetic checklist

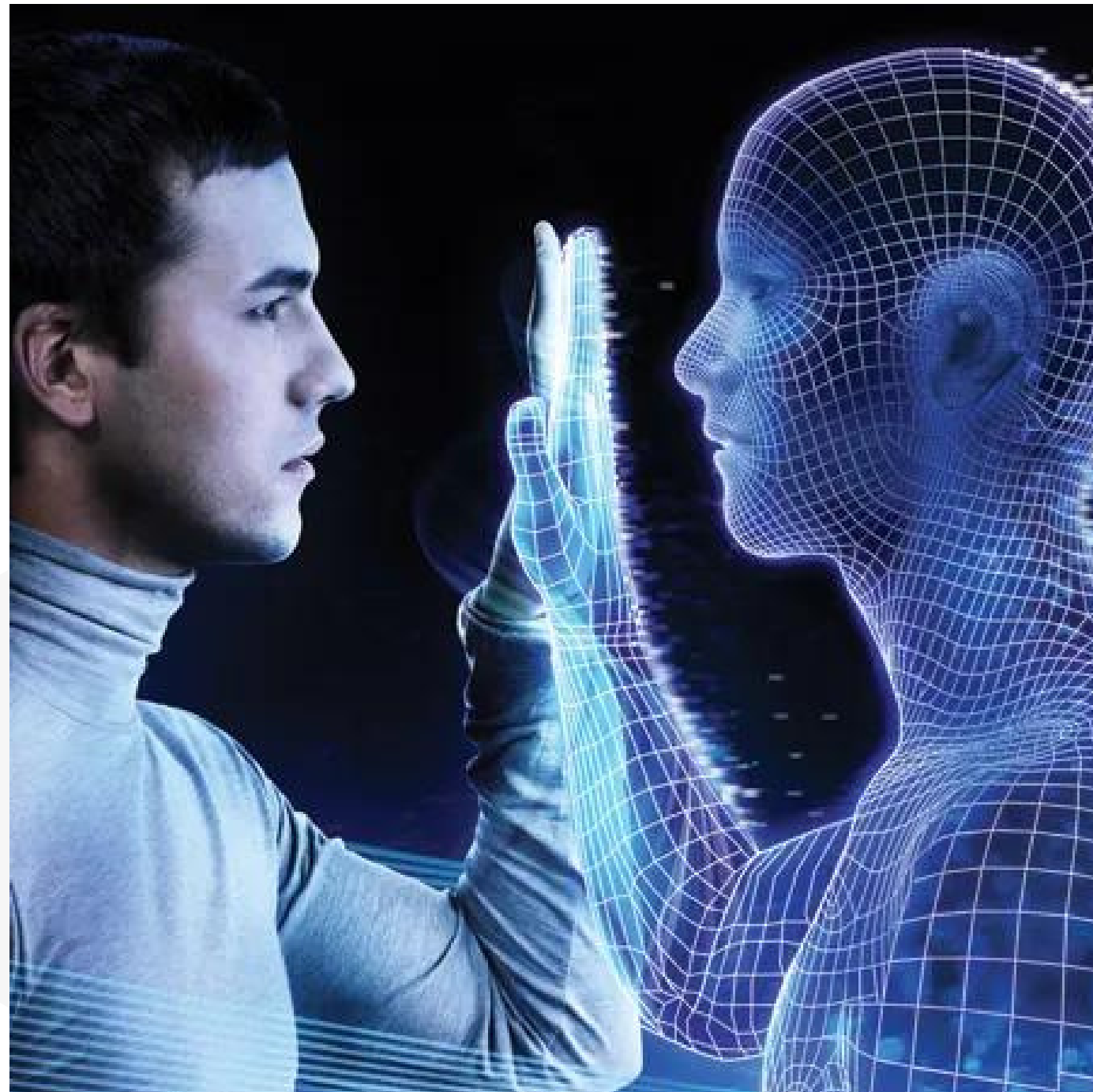
7

TASEER SULAIMAN

Generations of Zirconia...What Every Clinician Needs To Know From Material Selection to Clinical Application

“Leading Dentists And Defining Excellence
In Dental Education Since 2004”

◀ WELCOME TO DENTAL ED ▶



"If you are looking for educational content that is fresh, cutting-edge and presented by some of the most dynamic dental experts from around the world, then Dental ED is for you!"

Dental ED Study Clubs are designed to help dental professionals acquire excellent clinical knowledge that can be applied in the dental office. The program provides members with high-quality educational content presented by the world's best educators using high-end video technology; a concept first introduced by Dental ED to the dental industry around the world in 2004. Members are also offered treatment planning and small hands-on workshops during the year to meet their continuing education needs.

As Dental ED study club are located in multiple regions, it means you will never need to travel far or take valuable time away from your practice to participate in one of our study clubs. If a Dental ED Study Club is not offered in your region, contact us about starting a new study club or consider our online membership option.

Dental ED — "Leading Dentists And Defining Excellence In Dental Education Since 2004"



FADI YASMIN

FACIALLY DRIVEN IMMEDIATE IMPLANT REHABILITATION -
ANALOG AND DIGITAL WORKFLOWS (1.75 CE POINTS).

February 2 2023 - 7pm

The workflows involved in immediate implant rehabilitation require optimal proficiency in key elements of reconstructive dentistry namely; digital smile design, surgical planning and prosthetic protocols (both analogue and digital). The ability to deliver the perfect prosthetic solution starts with digitalising the patient allowing the facilitation of digital smile design. Digital dentistry has made the planning process not only predictable but incredibly accurate, thus making the surgical process a seamless integration. This lecture will cover a step by step from the initial planning to the delivery of the immediate prosthesis, concluding with the complete digital workflow of the Zirconia hybrid upgrade."

Dr Fadi Yassmin graduated from Sydney University in 1993 and has since then developed a reputation of one of the leading dental implant and cosmetic practitioners in Sydney. With a Masters in Aesthetic Dentistry from Kings College London, is a Master Clinician in Implantology and a post graduate diploma in orthodontics from the city of London Dental School he ensures that he keeps up to date with all current treatment techniques and that he and his staff are committed to serving the needs of their patients. He is a Digital Smile Design instructor and KOL along with being a KOL for Dental Monitoring which is a leader in the AI space in dentistry and newly appointed Straumann KOL in the aesthetic space due to his profound knowledge of multi-disciplinary treatments.

Learning Objectives That Will Be Explained In This Program Include:

- The importance of digitising the patient for complex treatment and digital smile design
- Facially driven prosthetics guiding surgical planning
- Fixed prosthetic options and the varying protocols



Prof. Paul Abbott is the Winthrop Professor of Clinical Dentistry at The University of Western Australia. He is a Specialist Endodontist and prior to taking a full-time University position in 2002, he spent 17 years in private specialist endodontic practice in Perth and Melbourne. During this time, he also held part-time academic positions at The University of Western Australia and the University of Melbourne. He was the Dean/Head of the School of Dentistry at The University of Western Australia and Director of the Oral Health Centre of WA from 2003-2009. He has presented over 1000 lectures and courses in 46 countries (many countries on numerous occasions). He has published over 220 articles in refereed journals, 25 textbook chapters and 47 Newsletter articles. Since 2015, he has been the Editor-in-Chief of the international journal Dental Traumatology. He has received numerous awards for excellence in teaching and for service to the dental profession, particularly in education and research. In 2015, the Governor-General of Australia appointed Prof. Abbott as an Officer of the Order of Australia (AO) for "distinguished service to clinical dentistry, and to higher education, as an academic, researcher and author, to endodontics as a practitioner, and to professional organisations."

PAUL ABBOTT

THERE ARE CRACKS ... AND THERE ARE CRACKS – BUT WHAT IS A CRACK AND WHAT DO I DO ABOUT A CRACK?
(1.75 CE POINTS).

March 9 2023 - 7pm

"Cracked teeth" is one of the most widely debated and disputed topics in dentistry. It is also one of the most misunderstood topics in dentistry. The confusion and misunderstandings stem largely from early work on cracks and the lack of a good definition of a crack in a tooth. Many dentists are confused about cracks and fractures, and they use these terms interchangeably even though they represent different problems in the tooth. The confusion and misunderstanding also stem from the traditional approach to dealing with cracks in teeth which has largely been a mechanical approach. Whilst cracks do represent a weakness in the tooth structure, they are also a pathway for bacteria to enter the tooth and cause pulp disease. The symptoms associated with cracks in teeth come from the pulp and therefore it is essential to diagnose the pulp status and then to manage the bacterial aspect of cracks rather than just dealing with them as a mechanical problem. This lecture will define cracks, explore the effects of cracks on teeth and provide guidelines for the diagnosis and management of teeth with cracks – especially teeth that have reversible pulpitis, which can be managed conservatively.

Learning Objectives That Will Be Explained In This Program Include:

- Define cracks and fractures and differentiate between them
- Understand that cracks are an aetiology of various diseases, and not a disease or a syndrome
- Outline the consequences of cracks in teeth
- Discuss the progression of the pulp and peri-radicular conditions caused by cracks
- Outline how to diagnose and assess cracks in teeth
- Manage teeth with reversible pulpitis in a conservative manner

JIM MCKEE

A NEW PERSPECTIVE ON OCCLUSION (1.75 CE POINTS).

May 4 2023 - 7pm

Today, we have a better understanding of many occlusal problems that have challenged our profession for decades. Our ability to understand occlusion begins with redefining occlusion to include not only the teeth but also the TM joints. By expanding occlusal concepts to include both the teeth and the TM joints, we finally have answers why some patients have malocclusions, why some patients have pain and why some patients have both. As both a specialist and a restorative dentist, the key to success in most cases is the ability to manage bite forces both at the tooth level and the joint level.

During this presentation, we will discuss traditional occlusal concepts that have proven success. We will also discuss traditional occlusal concepts that may be outdated given our increased knowledge in occlusion and TM joints. Additionally, we will also discuss managerial concepts such as fees, insurance coverage and the verbal skills for increased case acceptance. Combining the clinical and managerial information will provide a framework for implementation in your practice.

Learning Objectives That Will Be Explained In This Program Include:

- Recognise high-risk occlusion and TM joint patient when considering restorative dentistry, implant dentistry, orthodontics, orthognathic surgery, or airway treatment.
- Learn new concepts in occlusion and TM joint diagnosis and treatment planning and learn what historical occlusal/TMD concepts may need revision.
- Develop an treatment planning protocol that can be used on for predictable treatment outcomes on both low-risk and high-risk occlusion patients.



Jim McKee is in private practice in Downers Grove, Illinois. Jim has a restoratively based practice with an emphasis on occlusion and temporomandibular joint disorders. In addition to private practice, Jim is a published author who has lectured national and internationally for over 25 years. Jim provides a new perspective on occlusion and TM joints that helps increase the predictability of occlusal, orthodontic, restorative, orthognathic and airway treatment options for both the patient and the dentist. He is the founder of the Chicago Study Club program and has extensive experience in directing study clubs in the United States and Canada. He is a Resident Faculty member at Spear Education in Scottsdale, Arizona. Jim is a past-president of the American Academy of Restorative Dentistry and the American Equilibration Society.



BOB MARGEAS

MATCHING A SINGLE CENTRAL WITH A DIRECT COMPOSITE VENEER (1.75 CE POINTS).

June 15 2023 - 7pm

Matching a single tooth is one of the most difficult challenges we face as restorative dentists. Which material gives you the best chance of matching? Utilizing composite resin will allow the dentist to control hue, value and chroma. This lecture and demonstration will go into great detail on how to use composite resins, tints, incisal effects and surface texture to replicate a natural looking tooth.

Dr. Margeas graduated from the University of Iowa College of Dentistry in 1986 and completed his AEGD residency the following year. He is currently an Adjunct Professor in the department of Operative Dentistry at the University of Iowa. He is Board Certified by the American Board of Operative Dentistry. He is a Diplomate of the American Board of Aesthetic Dentistry, a Fellow of the Academy of General Dentistry, American Society for Dental Aesthetics and International Team of Oral implantologists (ITI). He has written numerous articles on esthetic and implant dentistry, and lectures and presents hands-on courses nationally and internationally on those subjects. He is currently the Editor in Chief of Inside Dentistry, on the Editorial Board of Compendium, and is a contributing editor to Oral Health in Canada. His memberships include OKU Honor Dental Society, American Academy of Esthetic Dentistry, and the American Academy of Restorative Dentistry. Dr. Margeas maintains a full-time private practice focusing on comprehensive restorative and implant dentistry in Des Moines, Iowa.

Learning Objectives That Will Be Explained In This Program Include:

- How to use tints to create chroma and incisal translucency
- Surface texture to match a natural tooth
- How to layer for maximum aesthetics



ASC PROF ALEX MOULE

DENTAL OR MENTAL; AN ENDODONTIST LOOKS AT OROFACIAL PAIN (1.75 CE POINTS).

September 7 2023 - 7pm

This lecture addresses difficulties in assessing patients with orofacial pain, not by describing the various painful conditions, but by addressing the questions that need to be asked and then analysing the responses to these (What should I ask? What does this answer mean? What else do I need to know?).

Numerous case histories illustrating painful orofacial conditions will be presented in a problem-solving manner. Emphasis will be placed on the descriptors used by patients and to both the verbal and nonverbal responses to questioning.

With over 30 years of experience in endodontic practice, Alex Moule completed his Doctorate of Philosophy in 1979, subsequently becoming an Honorary Professor at the University of Queensland. Professor Moule has taught dentistry internationally and in Australia and remains very active in dental research. He has supervising projects at many universities, contributing to over 70 research publications. Over his career, he has been awarded, four international fellowships. He has held many senior titles in the dental profession, including World President of the International Association of Dental Traumatology and President of the Australian and New Zealand Academy of Endodontists, and is a 40-year member of the Australian Society of Endodontology. Until recently, Professor Moule was the Discipline Lead at the School of Dentistry, University of Queensland.

Learning Objectives That Will Be Explained In This Program Include:

- How listening to descriptors, observing patients, and analysing verbal and non-verbal responses can assist in the diagnosis of orofacial pain.
- How an alternative method of assessment involving screening, and condition-specific questioning, and the use of a diagnostic tree can be useful in diagnosis how analysing associations with treatment can help diagnosis
- Better distinguish the difference between odontogenic and non-odontogenic pain

PASCAL MAGNE

THE NATURAL ORAL BLUEPRINT; AN AESTHETIC CHECKLIST(1.75 CE POINTS).

October 19 2023 - 7pm

The entire planet has gone digital. Dentistry is moving quickly in the implementation of the newest technologies available. An integrated approach that looks at diagnosis and treatment as well as smile design, and single unit dentistry for the everyday practice. Attendees will be able to communicate the desired outcome to the patient and the ceramist, making it a winning combination. This presentation will help the practices of today get ready for the digital world of tomorrow.

Learning Objectives That Will Be Explained In This Program Include:

- Basic principles of natural oral aesthetics.
- A checklist of important criteria for aesthetic restorative success.
- Gingival aesthetics and challenges related to the loss of inter-dental tissues in fixed partial dentures and implant-supported restorations.



Dr. Pascal Magne was born in La Chaux-de-Fonds (Switzerland) in 1966. He grew up and followed his primary education in Neuchâtel then moved to Geneva where he graduated in dentistry in 1989 and completed a Doctoral Thesis in 1992.

He taught and continued his postgraduate education in Prosthodontics and Operative Dentistry at the University of Geneva until 1997. Awarded with major grants by the Swiss Science Foundation, the Swiss Foundation for Medical-Biological Grants, and the International Association for Dental Research, he spent two years as a full-time research scholar in Biomaterials and Biomechanics at the University of Minnesota between 1997 and 1999.

Back at the University of Geneva, he received his PhD degree in 2002 and served as Senior Lecturer from 1999 to 2004.

TASEER SULAIMAN

GENERATIONS OF ZIRCONIA...WHAT EVERY CLINICIAN
NEEDS TO KNOW FROM MATERIAL SELECTION TO
CLINICAL APPLICATION
(1.75 CE POINTS).

November 30 2023 - 7pm

NOT ALL ZIRCONIAS ARE THE SAME!! There have been numerous generations of monolithic zirconia since its introduction as a full contour indirect restorative material in 2010. Manufacturers and researchers hope to develop a zirconia material that combines strength and translucency. This presentation will provide an in-depth overview of the various zirconia generations and what a clinician should know about the mechanical and optical properties of each generation to aid in the selection process when prescribing zirconia restorations. The most recent monolithic zirconia cementing protocols will also be discussed. Finally, what clinical-based evidence on monolithic zirconia restorations has recently been reported in the literature, and can an alternative laboratory survey method provide useful information on zirconia's current clinical status?

Learning Objectives That Will Be Explained In This Program Include:

- Attendees will be able to classify the various types of zirconia materials that are currently available based on their Yttria concentration.
- Recognise the mechanical (including wear characteristics) and optical properties of each zirconia type, as well as their impact on clinical considerations.
- Attendees will learn how to effectively cement zirconia restorations and learn about recent clinical outcomes.



TAISEER SULAIMAN is a Tenured Associate Professor and the Director of the Advanced Operative Dentistry and Biomaterials Research at the Adams School of Dentistry, University of North Carolina at Chapel Hill where he earned his clinical certificate in Operative Dentistry and his PhD in Dental Materials from the Department of Prosthetic Dentistry and Biomaterial Sciences from the University of Turku in Finland in collaboration with the Department of Operative Dentistry at UNC. Dr. Sulaiman is a wet-handed clinician, and a researcher who is passionate about bridging the gap between dental research and clinical application. Dr. Sulaiman's research focus is on dental ceramics, adhesion, cements, color and appearance in dentistry, and biomimetics. He has published over 80 peer-reviewed articles, abstracts, and book chapters. He is a member of many academies including the Academy of Operative Dentistry (where he serves as councilor to the academy), the Society of Color and Appearance in Dentistry, IADR/AADR, and the American Dental Association. He has lectured on numerous national and international stages and serves as a reviewer for many peer-reviewed journals.



CONTACT US



USA (323) 970 3216



support@dentaledgeglobal.com



www.dentaledgeglobal.com



449a Lygon Street
East Brunswick
Vic Australia 3056



Leading Dentists Since 2004



SERVICES



ANALYTICS AND MARKETING



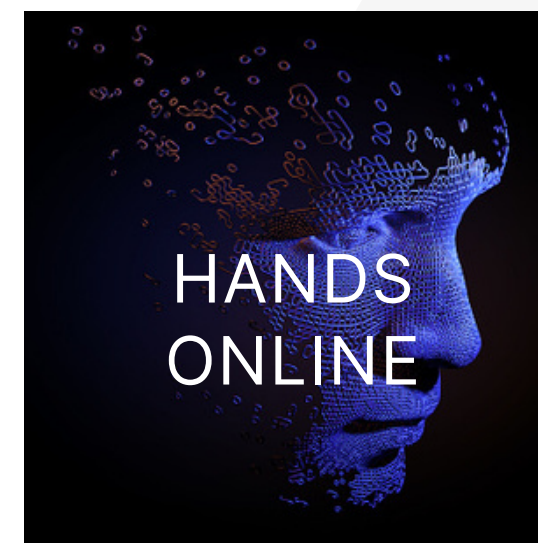
Powerful full range practice analytics and digital practice development platform



CRM AND TASK MANAGEMENT



Advanced CRM, task management and project management system



HANDS ON COURSES ONLINE



Academy online for hands on course program solutions